



# EMPORIA COUNTRY CLUB

## GENERAL COURSE RULES

apply on all holes, **unless otherwise noted**

- All roads/parking lots & beyond are OB. Roads/parking lots are defined as any man made pavement or concrete to include adjacent curbs and sidewalks if present.
- All cart paths and sidewalks & beyond are OB.
- All ponds and creeks/ditches are OB (defined by water's edge unless painted lines are present, at which time the painted lines are the OB line for the pond).
- All tall grass is OB (defined by tall grass edge unless painted lines are present, at which time the painted lines are the OB line for the tall grass).
- All traditional golf greens, traditional golf tee boxes, traditional golf fairways, and traditional golf bunkers are OB unless otherwise noted.
- Fairway dividers are painted lines dividing holes on the course and serve as OB lines.
- All disc golf tee pads located within the defined in bounds area of a hole are in bounds for that hole.

# PARKING & TOURNAMENT CENTRAL LOCATIONS

## ADDRESS

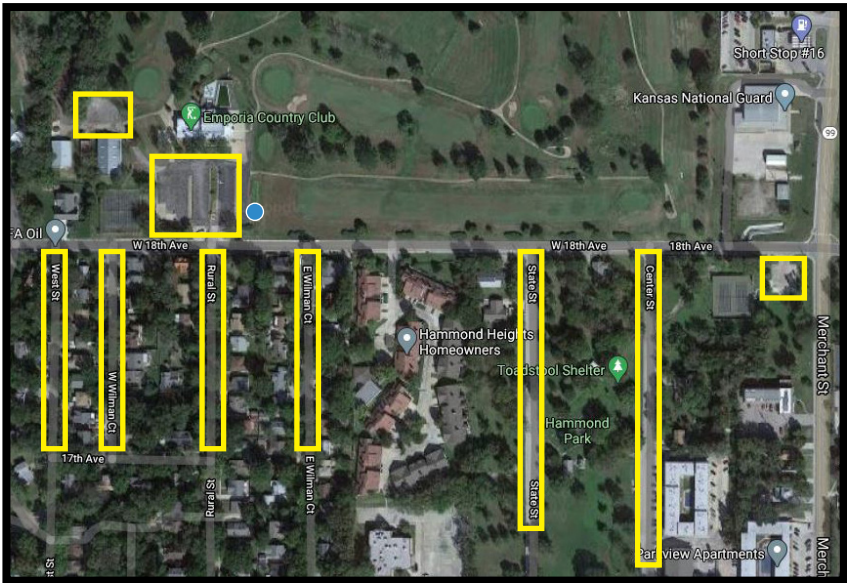
1801 Rural Street, Emporia, KS 66801

## PLAYER CHECK-IN & TOURNAMENT CENTRAL

Players should check-in 10 minutes before their assigned tee time at the Dynamic Discs RV located by the Hole 1 tee box in the southeast corner of the parking lot. The course directors will be at this location.

## PARKING

ONLY Players, Media, and Event Staff may park in the Emporia Country Club parking lot. If spots are not available in the main parking lot, please park on any side streets that head south off N. 18th. You cannot park on N. 18th. Additional parking is also available at Hammond Park.



**TOURNAMENT CENTRAL**



**PARKING**

# EVENTS

WEDNESDAY - APRIL 28, 2021

## ROUND ONE



### **COURSE DIRECTOR**

**RYAN DRAPER // 254-717-3122**

### **ASSISTANT COURSE DIRECTOR**

**DAVE MUNTEAN // 850-212-1115**

**BEN MARX // 254-495-9030**

Tee times start at 7:30AM

THURSDAY - APRIL 29, 2021

## ROUND TWO



### **COURSE DIRECTOR**

**RYAN DRAPER // 254-717-3122**

### **ASSISTANT COURSE DIRECTOR**

**DAVE MUNTEAN // 850-212-1115**

**BEN MARX // 254-495-9030**

Tee times start at 7:30AM

FRIDAY - APRIL 30, 2021

## ROUND THREE



### **COURSE DIRECTOR**

**RYAN DRAPER // 254-717-3122**

### **ASSISTANT COURSE DIRECTOR**

**DAVE MUNTEAN // 850-212-1115**

**BEN MARX // 254-495-9030**

Tee times start at 7:00AM

SATURDAY - MAY 01, 2021

## FINAL ROUND



### **COURSE DIRECTOR**

**RYAN DRAPER // 254-717-3122**

### **ASSISTANT COURSE DIRECTOR**

**DAVE MUNTEAN // 850-212-1115**

**BEN MARX // 254-495-9030**

Tee times start at 7:30AM



# COURSE INFO AND O.B. NOTES

## FRONT 9

HOLE   PAR   DST (L)   DST (S)   HOLE SPECIFICS

HOLE	PAR	DST (L)	DST (S)	HOLE SPECIFICS
1	5	1,175'	975'	Cart path & beyond on left, sidewalk & beyond on right, gravel road & beyond long, traditional golf green, traditional golf tee boxes, and fairway divider & beyond are all OB. <b>Traditional golf fairway is in bounds on this hole.</b> <i>FPO plays to the short pin.</i> <i>MPO &amp; MA1 play to the long pin.</i>
2	4	731'	557'	Cart path & beyond on left, traditional golf fairway & beyond on left, gravel road & beyond on right, fence & beyond on right, and fairway dividers & beyond on left and long are all OB. <b>Tall grass is in bounds on this hole.</b> <i>FPO plays from the short pad.</i> <i>MPO &amp; MA1 play from the long pad.</i>
3	4/3	489'		Traditional golf fairway & beyond on left, fairway divider & beyond on left, and cart path & beyond on right and long are all OB. <i>FPO - Par 4</i> <i>MPO &amp; MA1 - Par 3</i>
4	3	423'		Cart path & beyond on left, fence line & beyond on right, traditional golf green, traditional golf bunker, and traditional golf fairway beyond ditch are all OB. <b>Much of the traditional golf fairway is in bounds on this hole.</b>
5	4	666'	521'	Cart path & beyond on right, traditional golf tee, traditional golf fairway & beyond on left, and fairway dividers & beyond on left and long are all OB. <b>Concrete path crossing fairway is in bounds.</b> <i>FPO plays from the short pad.</i> <i>MPO &amp; MA1 play from the long pad.</i>
6	3	335'		Traditional golf green, traditional golf bunker, traditional golf fairway, fairway dividers & beyond, tall grass & beyond long, and cart path are all OB.
7	4	669'	515'	Cart path & beyond on left and short right, traditional golf fairway & beyond on right, fairway dividers & beyond on right and long are all OB. Long tee pad is an island in OB. If tee shot(s) from the long tee pad does(do) not fly over any in bounds portion of the hole, player's next shot is restricted to the Drop Zone or the initial long tee pad. Normal OB rules apply to throws from Drop Zone and for any shot that flies over any part of in bounds. <b>Short tee pad also serves as Drop Zone for the long tee pad.</b> <i>FPO plays from the short pad.</i> <i>MPO &amp; MA1 play from the long pad.</i>
8	5	990'	903'	Cart paths & beyond short, left, right, and long, fairway dividers & beyond on left, tall grass, and pond are all OB. Tee pad is an island in OB. Short of cart path off of tee is OB. If tee shot(s) from the long tee pad does(do) not fly over any in bounds portion of the hole, player's next shot is restricted to tee pad. After disc has flown over any in bounds portion of the hole, normal OB rules apply. <i>FPO plays to the short pin.</i> <i>MPO &amp; MA1 play to the long pin.</i>
9	5/4	699'	649'	All area short of ditch, creek & beyond, cart path & beyond on left, traditional golf fairway, fences & beyond, and fairway dividers & beyond are all OB. Long and short tee pads are islands in OB. If any throw from either tee pad does not come to rest safe in bounds, player's next shot is restricted to the Drop Zone or the initial tee pad assigned to the player's division. All of the treed and tall grass area past the first ditch and left of the creek is safe until you reach the fairway divider past the basket. <b>NOTE: The short tee pad is NOT the Drop Zone. Traditional golf tee box on left is in bounds.</b> The Drop Zone is an island in OB. Normal OB rules apply for all throws from the Drop Zone. <i>FPO plays from the short pad as a par 5.</i> <i>MPO &amp; MA1 play from the long pad as a par 4.</i>

# COURSE INFO AND O.B. NOTES

## BACK 9

HOLE PAR DST (L) DST (S) HOLE SPECIFICS

10	3	391'		Traditional golf fairway & beyond on left, tree line and tall grass & beyond on right, traditional golf green long, and fairway divider & beyond long are all OB.
11	3	399'		Cart path & beyond left and long, traditional golf green, right side of traditional golf fairway & beyond, traditional golf tee box, and fairway divider & beyond are all OB. <b>Traditional golf fairway is in bounds on this hole.</b>
12	3	314'		Traditional golf fairway & beyond on left, tall grass & beyond on right, and fairway divider & beyond long are all OB.
13	3	394'	320'	Cart path & beyond on right, tall grass on left, and fairway divider & beyond long are all OB. <i>FPO plays to the short pin.</i> <i>MPO &amp; MA1 play to the long pin.</i>
14	4	751'	574'	Cart path & beyond on left, fence lines (all parts of fences are OB) and property lines & beyond on right, traditional golf green & beyond, and fairway dividers & beyond are all OB. <b>Traditional golf fairway is in bounds on this hole.</b> <i>FPO plays from the short pad.</i> <i>MPO &amp; MA1 play from the long pad.</i>
15	3	438'	347'	Island Green defined by the following OB lines; cart paths, left side of traditional golf fairway, and fairway dividers. If player's throw(s) from the tee pad does(do) not come to rest in bounds on island green, the player's next shot is restricted to the Drop Zone or the tee pad. Normal OB rules apply for any shots from the Drop Zone or from the island itself. <b>NOTE: The short tee pad is NOT the Drop Zone.</b> <i>FPO plays from the short pad.</i> <i>MPO &amp; MA1 play from the long pad.</i>
16	3	315'	262'	All water, cart path & beyond right, paint lines & beyond, and bridge & beyond are OB. If player's throw(s) from either the long or short tee pad does(do) not come to rest in bounds, the player's next shot is restricted to the Drop Zone or the tee pad. Normal OB rules apply for any shots not thrown from the tee pad. <b>The traditional golf tee box on the island is in bounds. NOTE: The short tee pad is NOT the Drop Zone.</b> <i>FPO plays from the short pad.</i> <i>MPO &amp; MA1 play from the long pad.</i>
17	5/4	806'		Tall grass and tree line & beyond to left and long, cart path & beyond long, traditional golf fairway & beyond, traditional golf bunkers & beyond, traditional golf green & beyond, fairway dividers & beyond short left and right, and water & beyond are all OB. Mando left of tree. If mando is missed, the player's next shot is restricted to the Drop Zone or the tee pad. Normal OB rules apply for any shots not thrown from the tee pad. <i>FPO - Par 5</i> <i>MPO &amp; MA1 - Par 4</i>
18	3/4	673'	413'	From long tee pad, cart path & beyond short and left, pond, traditional golf green, tree line & beyond long, bridge, traditional golf tee box, and fairway dividers & beyond are OB. The long tee pad is an island surrounded by OB. If player's throw(s) from the long tee pad does(do) not come to rest in bounds, the player's next shot is restricted to the Drop Zone (also short tee pad) or the long tee pad. From the short tee pad, cart path & beyond left, pond, traditional golf green, tree line & beyond long, traditional golf tee box, and fairway dividers & beyond are OB. Normal OB rules apply for any shots not thrown from the long tee pad. <b>Portions of the traditional golf fairway are in bounds. Note: The short tee pad is also the Drop Zone for the long tee pad.</b> <i>FPO plays from the short pad as a par 3.</i> <i>MPO &amp; MA1 play from the long pad as a par 4.</i>